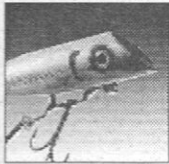




Lake Washburn Association NEWSLETTER

July 1999

Inside:



PAGE 2

From the President
By Pat Behning



PAGE 3

Boat House
Questions before taking
your boat out onto the
lake...



PAGE 4

DNR offers tips
to attract birds to
feeders



PAGE 4

Annual Birch Bay
4th of July Parade

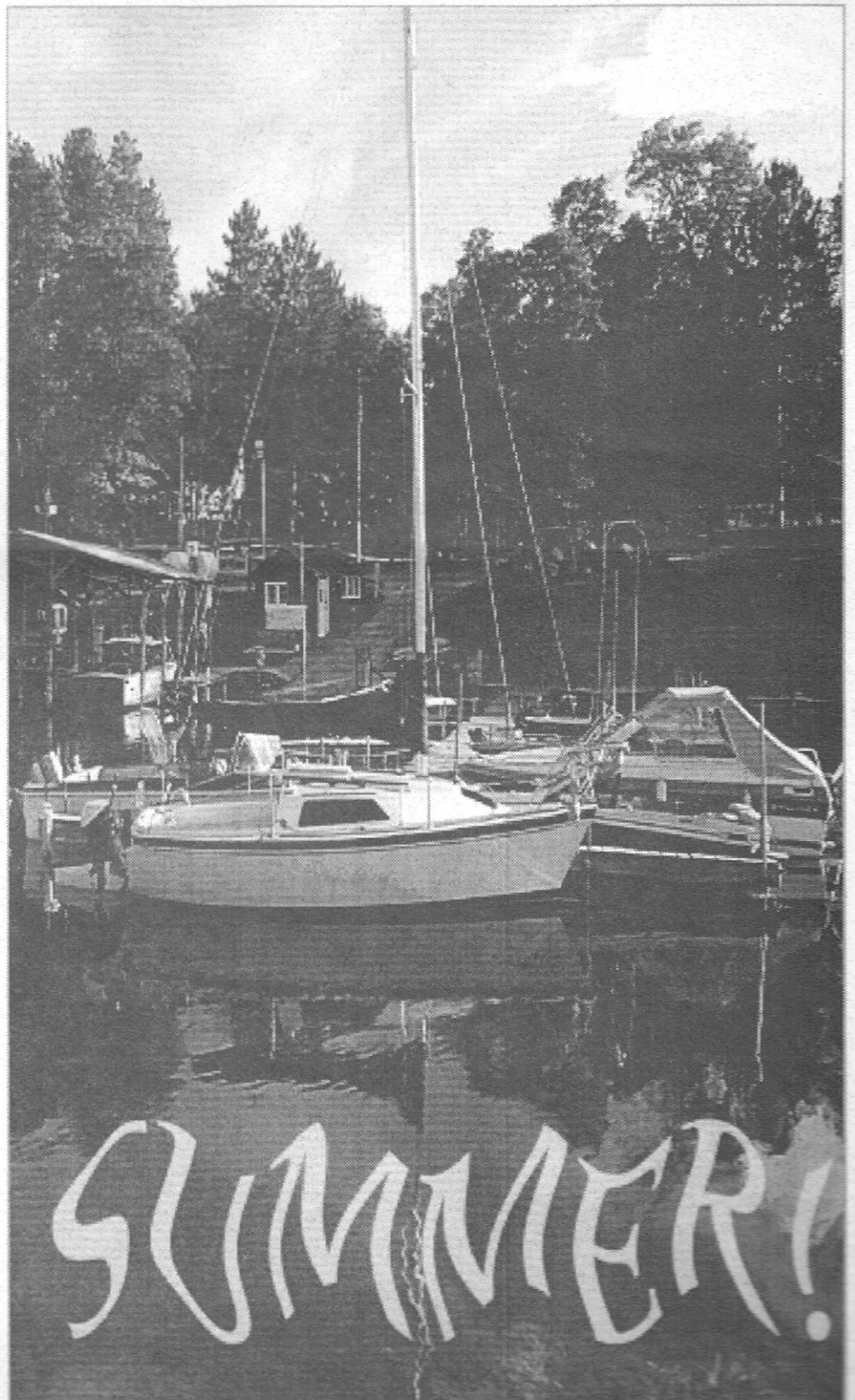


PAGE 6

*The History of Birch
Lake Lodge*
Courtesy of Pat
Mechelke

E M T s NEEDED!

Crooked Lake Township needs additional EMTs. Anyone interested in volunteering as an EMT should contact Fred Borgwardt at 218-792-5740, or see page 3 for other Town Board Member for details.





FROM THE PRESIDENT

By Pat Behning



This is the time for the annual "Welcome back" to the seasonal residents of Lake Washburn. I'm sure everyone has noticed the high water levels. I've been told by a long-timer that this level may be a record. It is no wonder, since our, less-than-scientific, water gauge measured 8 inches of rain the middle week of May.

We have received many memberships to the Lake Washburn Association for 1999. Out thank-you to those who have mailed you memberships early. We hope those of you who have not done so will use the form included in this newsletter and join us soon.

Along with your memberships we have received several comments about LWA and want you to know we appreciate your input. I would implore those of you who indicated particular concerns about the fish quantity and quality in Lake Washburn to contact members of the Fish Committee with suggestions for improvement and solutions to the existing problems as you see them. (A Fish Committee report may be found elsewhere in this newsletter.)

Additional comments and concerns are welcomed. Though the Board has limited powers to change or even influence regulatory bodies, it does want to address current issues with those agencies and persons in decision-making positions. Hopefully, addressing our concerns will impact decisions pertaining to all areas lakes,; Lake Washburn in particular.

Also, the Association wishes to thank Mary Smith for her generous gift to LWA as a memorial for her late husband, Dennis L. Smith. Mr. Smith was a long standing member of the Association. He died March 14, 1999. The gift has been allocated to the Fish Fund.

I will be leaving the office as President of the Lake Washburn Association this fall. We always have difficulty finding people to serve either as an officer or on the Board of Directors of LWA. I would encourage all of you to consider being a part of the organization in a more active capacity by serving either as an executive or a board member. Please notify Terry Carlson of any interest you may have. We will also need to fill the office of the Treasurer and three board members this fall.

The LWA has been active for many years with Highway 48, Lake Washburn Road, cleanup and with boat monitoring for exotic plants (milfoil) at the public landing. However, it has become very obvious

that the same people do the work as volunteers year after year. We have a large membership, so I am always puzzled when we are unable to find people to spend an hour or two to help out. Everyone is busy, everyone has company. everyone encounters conflicts, but we do need you; so consider giving a little of your time. Everyone benefits when you do. Twenty people were involved with the highway clean-up and boat monitoring during the Memorial Day weekend.

I will be doing the last newsletter for my tenure in August. You should receive your copy sometime in September. If you have anything you would like to have included in that newsletter, please call me at 792-5111 or drop me a note at:

5310 Coontail Lane N.E.
Outing, MN 56662

Thank you in advance for your interest.

We look forward to seeing you all at the Ice Cream Social on August 14, 1999. The topic for discussion at the General Meeting will be fire prevention and the availability of fire-fighting equipment on Lake Washburn. A topic of interest to all of us. The Ice Cream Social will begin at 6:00 P.M., followed by the business meeting at 7:00P.M. Come join your lake neighbors for some fun. Cost for the Ice-Cream Social is \$2.00 per person.

Pat Behning

1999 LWA OFFICERS / DIRECTORS

The following are the 1999 LWA Officers and Directors. Please feel free to call and talk with any of them with you concerns about Lake Washburn and the association.

OFFICERS; (One year terms)

PRESIDENT:	Pat Behning	218-792-5111
VICE-PRESIDENT	Ron Nichols	218-792-5386 / 515-278-4459
SECRETARY	Don Peterson	218-792-5257
TREASURER	Marje Anderson	218-792-5317 / 612-241-8333

DIRECTORS; (One year terms)

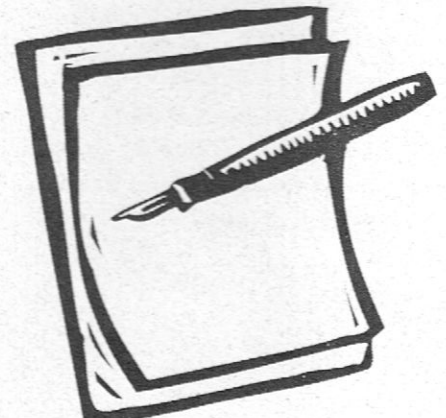
Rolie Hron	218-792-5517 / 612-934-8050
Jon Rask	218-792-5390
Cleone Riener	612-483-4497

(Two year terms)

George Fortmeyer	218-791-5416 / 612-631-0154
LaVon Heston	218-792-5455 / 515-282-6432
Mark Hegman	218-792-5499 / 612-920-2392

(Three year terms)

Gary Ahlquist	218-792-5452 / 612-448-6371
Terry Carlson	218-792-5829 / 612-427-2792



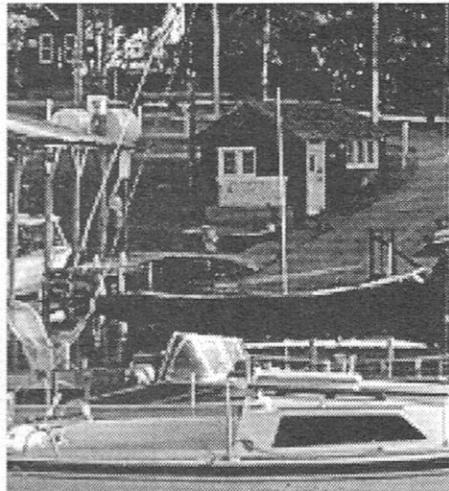


NOTES FROM THE BOATHOUSE

Ahh, the signs of summer in Outing. The call of the loon, the deer grazing like cattle on green grass alongside the byways, and the silent splash of boats as they enter and maneuver open water.

It is always wise to ask the following questions before taking your boat out onto the lake:

- Battery charged ?
- Full of fresh fuel? Oil?
- Gearlube full?
- Test run engine on flushcuff or in lake on trailer before casting off?
- Electrical accessories functional? Lights, bilge pump, blower.
- Approved life preservers for all aboard?
- Paddle? Anchor? Spare rope?
- Prop, prop nut, shear pin, cotter pin OK?
- Inspect all compartments for wildlife?



• Bilge PLug??? How many have gotten their feet wet before realizing the error of not putting the plug in? Maybe you've said, "That was close, I almost forgot the plug!" Take a minute. Check it out. Keep your nose above water. Enjoy summer in Outing.

Boat Safe.
Happy Landings.
Kirk, Land O' Lake Marina

WAVES FROM THE BOAT DOCTOR

Another boating and fishing season is upon us. Below are some tips to help you preserve the life of your boat and protect your investment.

- Have your boat engine serviced by an authorized marine dealer.
- Thoroughly clean, buff and wax your fiberglass boat.
- Reapply wax during the boating season.
- Dark colors, such as red, need to be waxed frequently.
- Spring or fall, chemically clean the bottom of your boat, to get the grime removed.
- When moving your boat, motor and trailer, clean all areas to stop the spread of exotic plants and animals.

Boat Doctor Up North

EMTs NEEDED!

Crooked Lake Township needs additional EMTs. Anyone interested in volunteering as an EMT should contact Fred Borgwardt at 218-792-5740, or any other Town Board Member for details.

Crooked Lake Town Board Supervisor

Fred Borgwardt	Vice-chairman	792 - 5740
Roger Fancher	Buildings, Canister Station	792 - 5103
	Town Hall Reservations	
Pat Fauls	Treasurer	792 - 5110
Larry Gibbs	Weed Control	792 - 5586
Bill Korman	Chairman	792 - 5144
Glen Mechelke	Clerk	792 - 5247
Rodney Schloesser	Road Supervisor	792 - 5771



MARK YOUR CALENDARS - DATES TO REMEMBER

July 2, 3, 4, 1999	Boat Monitoring, Public Lake Access
July 3, 1999	FIREWORKS - Luscher's Park in Outing (At dusk)
	Birch Bay Baot Parade (See: Annual Birch Bay 4th of July Parade)
	Outing in Outing
July 17, 1999	Emily Days
July 24, 1999	Village Inn RUN, WALK, CRAWL, STAGGER Annual 5K Race
August 14, 1999	General Membership Meeting, Election of Officers and Board Members
September 3, 4, 5, 1999	Highway Clean-up Boat Monitoring, Public Lake Access

ANNUAL BIRCH BAY 4th of JULY PARADE

The Annual Birch Bay 4th of July Parade will be held on July 3, 1999 at 1:00 pm. We will assemble in front of Schuller's again. Our plan is to go around Birch Bay counter clockwise, proceed out of the Bay and head towards the Narrows. We would like to go through the Narrows and then turn around and return, at which time you can disperse. PLEASE stay with us so others on the lake who are participating and have people on shore and those who have not joined us, may enjoy the festivities.

All boats are welcome to join us. You do not need a pontoon.

HOPE TO SEE YOU AT SOME OR
ALL OF THE ABOVE EVENTS!



DNR OFFERS TIPS TO ATTRACT BIRDS TO FEEDERS

The longer hours of daylight and the warmer weather have generated a flurry of reports to the Department of Natural Resources about mourning doves, robins, bluebirds and other migrating birds. To attract these species and others to backyard bird feeders, Carol Henderson, the DNR's Nongame Wildlife Program supervisor, offers five tips that could double the number of bird species at feeders.

1. Feed birds in all four seasons.
2. Provide water in all four seasons (best if water is heated in the winter, and dripping, splashing or misting in summer)
3. Use at least eight to 12 feeders, with three or four feeders grouped

into clusters.

4. Provide protection from predators (place feeders in an area with a 10-foot open radius; If the feeders are near shrubs or conifers, encircle with a 30-inch high rabbit fencing with a 2-by-4 inch mesh).
5. Clean feeders and ground areas regularly.

"The development of black oil sunflower seeds revolutionized bird feeding," Henderson notes. The seed coats are thinner so birds can easily crack them open, and the higher oil content provides more energy.

According to Henderson, the top 10 bird foods for Minnesota are:

- black oil sunflower seeds (best of the best because it is high energy food usable by large and small birds alike; should comprise 75 to 80 percent of all seeds used).
- suet/suet cakes.
- peanuts, nuts, peanut butter.
- shelled corn
- finch mix/thistle
- white proso millet/crack corn (increase use in spring and fall, decrease during summer

winter, this is good for feeding white-throated sparrows and juncos on the ground in the spring).

- apples, oranges, grape jelly (offer in spring, summer and fall, starting about May 1).
- mealworms (spring, summer and fall only - begin providing in April).
- sugar water (offer in spring, summer, and fall).

The rule of thumb is to begin feeding sugar water in late April, and take the feeder down in early October.

To learn more about bird feeding, check the Nongame Wildlife Program site on the Minnesota DNR's web site at www.dnr.state.mn.us. People can learn more about Minnesota's wildlife by reading DNR Nongame Wildlife Program books such as "Wild About Birds: The DNR Bird Feeding Guide," "Landscaping for Wildlife," and "Woodworking for Wildlife." The production of these books is financed primarily through donations to the Nongame, Wildlife Checkoff on Minnesota Income Tax and Property Tax forms.

and



ABOUT DEEP PORTAGE

Deep Portage is a year round residential environmental education center located on 6,307 acres of pine and aspen covered glacial hills, lakes, rivers and bogs an hour north of the city of Brainerd. The ten square mile Reserve surrounds six lakes and is bordered by seven more.

Overlooking Bass Pond, the Interpretive Center houses the museum, freshwater lab, bookstore and displays on loons, old growth forests, birding and much more. Using one of the Center's self-guides, you can take an enjoyable and informative hike on Deep Portage's many miles of nature trails that begin at the Interpretive Center. Also, view the wildflower gardens, observe weather stations, and experience the marshes and meadows on the bog boardwalk. There is no charge to enjoy these activities at Deep Portage.

Throughout the year many seminars and programs about nature are presented at Deep Portage. For further information about the activities offered, write:

Deep Portage Conservation Reserve
RR 1 Box 129
Hackensack, MN 56452
or phone 218 - 682 - 2325.

You may also e-mail the Reserve to:
portage@uslink.net.

Camping experiences are also provided at Camp Portage for boys and girls ages 10 to 14. The LWA offers two \$100.00 scholarships to children and/or grandchildren of Association members.

For further information contact:

Marje Anderson
LWA
Box 26
Outing, MN 56662
or at 219-792-5317 or 612-241-8333.

FROM THE FISH COMMITTEE

A Fish Committee was formed the summer of 1998 to see if further stocking of Lake Washburn could take place. Members are Arland Anderson, Greg Hosch, Jack Johnson, John Houston, Cy Kruse, Rod McKinley, and Jon Rask. Please relate any of your concerns or questions or ideas to any member.

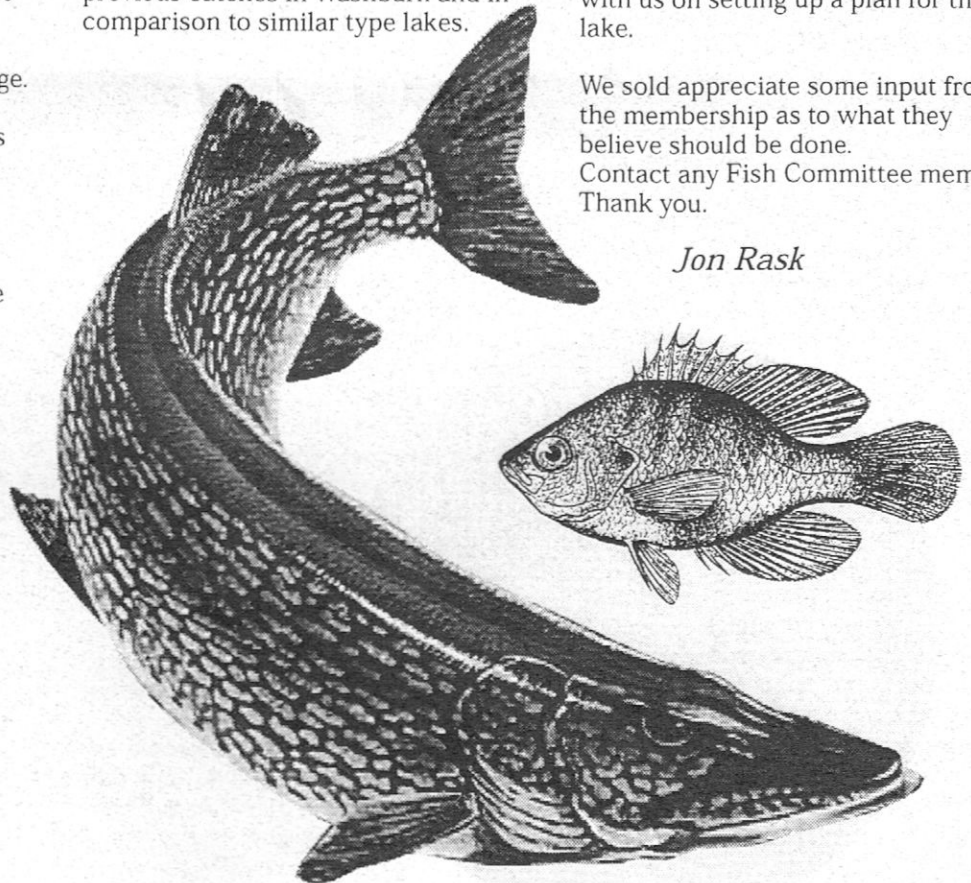
The state fish management set test nets in the summer of 1998. In 1998 the catches of northern pike, largemouth bass, bluegill, and tullibee were within the "typical" range for lakes similar to Lake Washburn. The perch catch was as low as it has been, but small perch remain abundant. Black crappie numbers were in the "high" category, both in comparison to previous catches in Washburn and in comparison to similar type lakes.

The state fish management program stocked 375 pounds of fingerlings in the fall of 1998. These were stocked in Birch Bay and at Dutton's Resort. Tim Brastrup, the area fisheries supervisor at Brainerd, attended our LWA General Meeting on June 5, 1999. He discussed the test netting and stocking of walleye on Lake Washburn. He reported that nine age-classes were sampled and about 45% of the fish were from the 1995 or 1996 year class. These fish represent natural reproduction in Washburn as no stocking was done during these years.

Brastrup would like to use Washburn as an experimental lake and not stock any fish for five years to see if natural reproduction would be better. At the end of this period he would stock the lake if it needed to be stocked. He also stated that he would cooperate with us on setting up a plan for the lake.

We sold appreciate some input from the membership as to what they believe should be done. Contact any Fish Committee member. Thank you.

Jon Rask





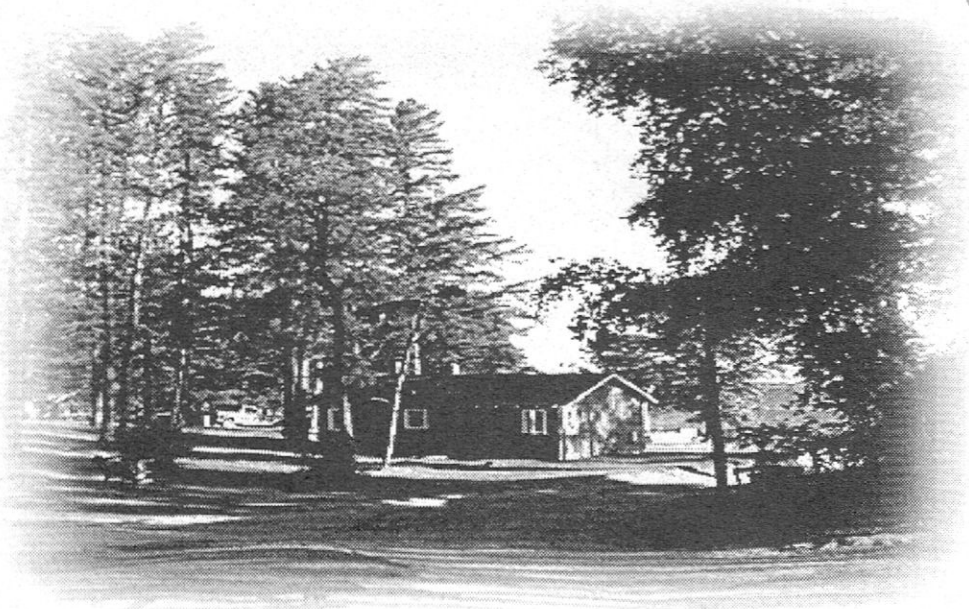
THE HISTORY OF BIRCH BAY LODGE

A resort in Northern Minnesota had always been a dream of Glen Mechelke's. He had attended the University of Minnesota, spent some time in the army, held some good jobs, but none of these were what he really wanted to do with his life.

Glen Mechelke and Pat Tallant had known one another since high school and were married in a simple ceremony in 1945. In 1946 Judy was born followed in 1947 by Barb. In the late summer of 1948 the grandparents agreed to watch over the children and Glen and Pat left to look for land or a resort in the Northwoods. They traveled many miles and finally found 40 acres and one-half mile of lakeshore on Lake Washburn. Glen had spent some great times on this lake as a young boy and teenager. It was a perfect choice. There was a small cabin on the land, which had been in use, and a roughed in cabin, which had to be completed. There was also a large open area that had been used for a garden. This would later be used to good advantage

Glen, Pat, Judy, Barb and Glen's parents, Alice and Ed, moved to Lake Washburn in 1949. The younger Mechelkes lived in the cabin and Alice and Ed moved into living quarters on the end of the garage, which was the first of many buildings to be erected. There was no electricity or owner tools, so all work was done by manually operated tools. Even cement was mixed by hand. By July 4, 1949 there were four cabins ready to be rented. Guests pumped water by hand and kerosene lamps were used.

During the fall and winter of 1949-50 a main lodge was built with living quarters for both families, and a recreation area for guests was constructed. There was still no electricity, but a metal tank was mounted up high enough in the basement to pump lake water into, using a gasoline powered motor. This stored water was then run into a flush



toilet. This water was also used for washing. Water for drinking was pumped by hand. The gasoline powered washing machine was a necessity.

The next big purchase was a light plant. Now there could be electric lights, although it would only accommodate 750 watts. There was an iron that would run on 750 watts and of course the light bulbs were smaller. One light bulb in each of the cabin and the rest of the light by kerosene lamps. Refrigeration was by ice cut from the lake during the winter months and stored in the "ice house". There the ice was insulated with saw dust. One of Glen's jobs was to deliver ice periodically to the cabins. Of course many people wanted to give him a beer on a hot summer day. By the early 1950s high line electricity came to Birch Bay. A real cause for celebration.

Communication during this time and for several years was with the old crank style phone. Many people were on one line and you did not talk about anything that you didn't want the world to know. A plus side of this was that if one were in trouble or needed help of any kind, just one very long ring brought any one on the line that was available. The ring at Birch Bay was a long and three shorts.

Back to the light plant days. Ed and Glen usually spent the late afternoon and early evening fishing with guests. Glen would always tell whomever he was with that if the light plant didn't start (it was sometimes temperamental) as it got dark, they would have to go in and get it going themselves.

The building continued and eventually there were 14 cabins and two trailers, as well as additions to the lodge for living quarters and recreation. There was a store and a snack bar as well as additional laundry facilities. One hundred sheets plus pillow cases and such were washed each week until, in the later years, a laundry facility in Brained took care of this.

In January of 1958 Kim Married joint the family. Judy and Barb now had a baby sister.

The resort was especially busy from the time the schools closed for the summer until the week before Labor Day. The resort opened for the fishing opener in May and closed after deer season. Of course as the fall got cooler the water had to be drained. People then had to use outside toilets and pump their own water. The American plan was furnished to some of the deer hunters and also to some of the spring fishing groups. This meant that very early breakfasts



needed to be prepared as well as an ample dinner for those who would have been in the woods or on the water all day. The deer hunters were a special challenge. After dishes in the evening junches were prepared for the next day for the hunters and/or fishermen to take with them.

There were various activities each week in the summer. When water skiing was first getting popular, it was provided for the guests, with Glen driving the boat and pat Showing the how. This was done several afternoons a week. A pot luck supper was held one evening a week, when everyone gathered in the lodge. The highlight for the children was the hay ride, held once a week. This included a wiener roast. There were no extra charges for any of this. "Mother's Night Out" was also a bit hit.

Judy, Barb, and Kim spent their teenage years working at the resort.

They, as well as the adults, made many lasting friends. They all enjoyed some very good times along with the hard work. The girls spent time in the store, helped with the laundry, and cleaned cabins. There was always plenty to do. It is interesting to note that a good number of former guests have moved to this area, some retired and some in business.

A campground was added to the resort over the years. At first it was just for tents and later water, sewer, and electricity were added for trailers.

In 1976, due to increased property taxes, lakeshore values, and short season the downsizing of the resort was begun. When it was finally decided to close the store and snack bar in the lodge, the oldest two granddaughters, Jessica Morris and Stacey Carstens, were disappointed. They had planned on working there.

Over the years, many people have wondered how the resort got its name. In the beginning years it was back to the cities to work during the winter for the Mechelkes. One year Ed decide to stay an extra week in the wood and do some brushing, a job which seemed never ending. The land was heavily forested to Birch trees. After his week of brushing, Ed said, "I know what we should call the resort." everyone agreed that Birch Bay Lodge should be it.

Even though the resort is no longer in operation (only a seasonal campground remains) the southern bay is still called and known as Birch Bay.

Courtesy of Pat Mechelke



L a k e W a s h b u r n A s s o c i a t i o n

M E M B E R S H I P

Name: _____
 Permanent Address: _____
 City: _____ St: _____ Zip: _____

Lake Address: _____
 City: _____ Zip: _____ Fire#: _____

Road Location: (Please check the road on which you reside. If your road is not listed, please write it in.)

- | | | |
|---|---|---|
| <input type="checkbox"/> Bear Paw Road | <input type="checkbox"/> Birch Bay Road | <input type="checkbox"/> Eastburn Road |
| <input type="checkbox"/> Fehr's Road | <input type="checkbox"/> Lake George Road | <input type="checkbox"/> Lois Lane |
| <input type="checkbox"/> Longwood Point | <input type="checkbox"/> Peninsula Road | <input type="checkbox"/> West Washburn Road |
| <input type="checkbox"/> Highway 6 | <input type="checkbox"/> Highway 48 | <input type="checkbox"/> Other |

I am interested in participating as marked:

- | | | |
|--|--|--|
| <input type="checkbox"/> Board Position | <input type="checkbox"/> Natural Resources | <input type="checkbox"/> Zoning/Planning |
| <input type="checkbox"/> Highway Cleanup | <input type="checkbox"/> Boat Monitoring | <input type="checkbox"/> Bouy Markers |
| <input type="checkbox"/> Fish Stocking | <input type="checkbox"/> Hydro-lab | |

Yearly Membership Donation: \$10.00 (Jan. 1-Dec. 31) New Renewal

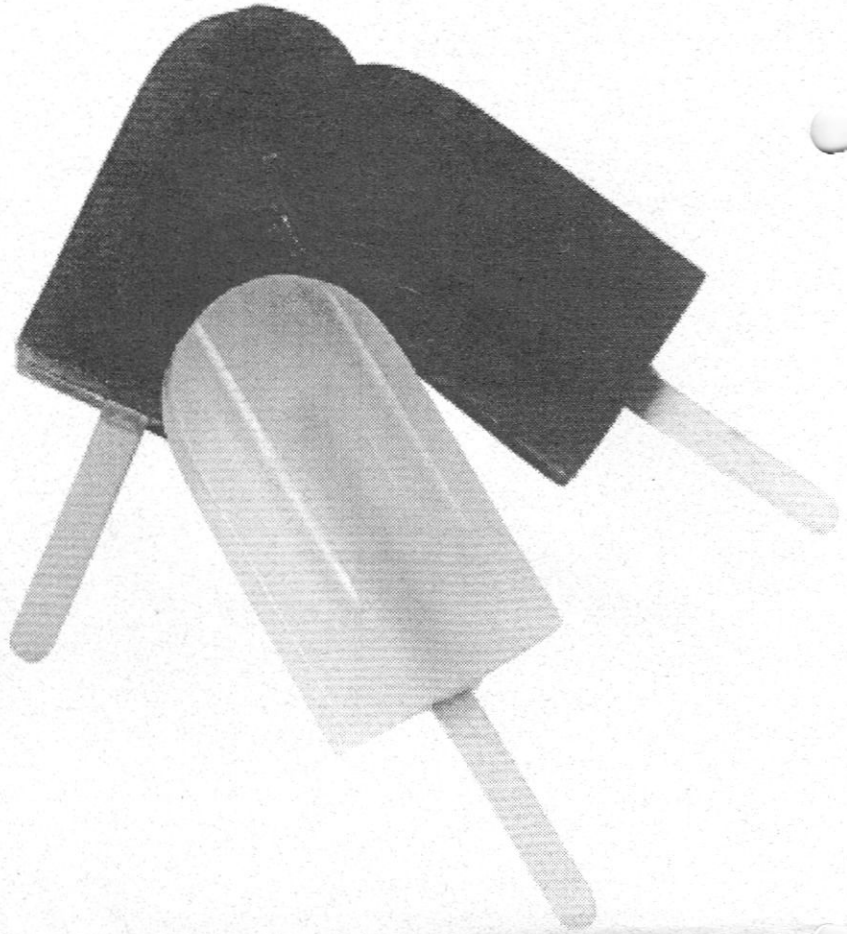
Additional Donation (amount): _____

- | | | | |
|--|------------------------------------|---------------------------------------|--|
| <input type="checkbox"/> Ecological Fund | <input type="checkbox"/> Hydro-lab | <input type="checkbox"/> General Fund | <input type="checkbox"/> Other (specify) |
|--|------------------------------------|---------------------------------------|--|

Mail completed form to:

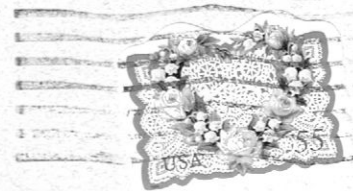
**Lake Washburn Association
 Box 26 • Outing, MN 56662**

Ahh,
the signs
of summer
in Outing.



 Lake Washburn Association
NEWSLETTER

BOX 26, OUTING, MN 56662



55420+5323

